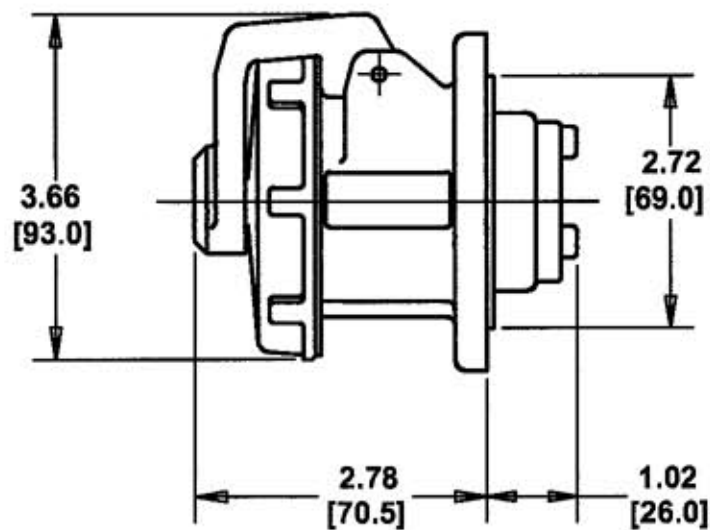
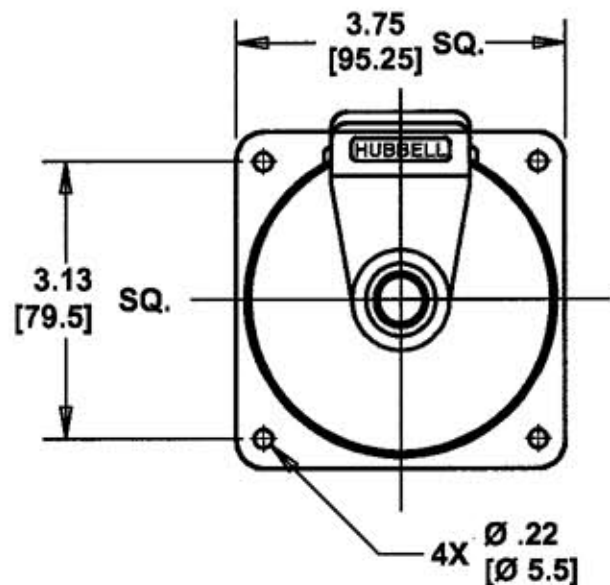


M-6069 4



LIST OF PARTS		
DESCRIPTION	MATERIAL	FINISH
HOUSING	SEE TABLE	
INTERIOR	THERMOSET	
SLEEVES	BRASS	
SLEEVE SPRINGS	ST. STEEL	
TERMINAL SCREWS	ST. STEEL	
COVER	POLYESTER	
COVER SCREW	BRASS	NICKEL
COVER SPRING	ST. STEEL	
GASKET	NEOPRENE	
DISC	POLYCARBONATE	
ARM	POLYESTER	
HINGE PIN	ST. STEEL	
HINGE SPRING	ST. STEEL	
ASSEMBLY SCREWS	ST. STEEL	

DIMENSION SHEET FOR CAT. NO. SEE TABLE

REPAIRABLE NON-REPAIRABLE

B

M-6069

4

CAT. NO.	CONFIGURATION	RATING	COMMENTS	HOUSING		CAT. NO.	CONFIGURATION	RATING	COMMENTS	HOUSING	
				MATERIAL	COLOR					MATERIAL	COLOR
						HBL420R7W		20 A 3Ø 480 VAC		NYLON	RED
						HBL420R9W		20 A 3Ø 250 VAC		NYLON	BLUE
HBL420R5W		20 A 3Ø 600 VAC		NYLON	BLACK						
HBL416R6W		16 A 380-415VAC		NYLON	RED	HBL420R12W		20 A 125/250 VAC		NYLON	ORANGE

SYM	REVISIONS	APP	DATE
4	REDRAWN ON CAD WITH CHANGES. ADDED "HOUSING" & "COMMENTS" COLUMNS TO TABLE AND NOTES 1 & 2. IN TABLE, "A" WAS "AMP" AND "380-415VAC" WAS "380VAC". IN LIST OF PARTS, "SEE TABLE" WAS "NYLON" AND "NEOPRENE" WAS "RUBBER". .22 DIM. WAS 7/32, "Ø" WAS "DIA." AND "[XX.X]" WAS "MM". 3.13/[79.5] SQ. WAS 3.125/79.37MM SQ. SUPERSEDES DRAWING DATED 4/30/80 PER DCN #12944. JMN	DJP	6/14/06

THE DESIGN AND DIMENSIONS OF THE PRODUCT SHOWN ON THIS DRAWING ARE SUBJECT TO CHANGE WITHOUT NOTICE

TITLE
16A & 20A 3 POLE 4 WIRE PIN AND SLEEVE RECEPTACLES

NOTES (UNLESS OTHERWISE SPECIFIED)
 1) TOLERANCES ARE:
 DECIMALS ± .03
 ANGLES ± 2°
 2) DIMENSIONS ARE: INCHES [MILLIMETERS]

TOLERANCES UNLESS OTHERWISE SPECIFIED		WIRING DEVICE—KELLEMS HUBBELL INCORPORATED BRIDGEPORT, CT	
FRACTIONS ± 1/64	DECIMALS ± .005	DR. BY WTC	APP. BY DJP
ANGLES ± 2°		TR. BY JMN	SCALE NONE
		CHK'D BY DJP	DATE 6/14/06